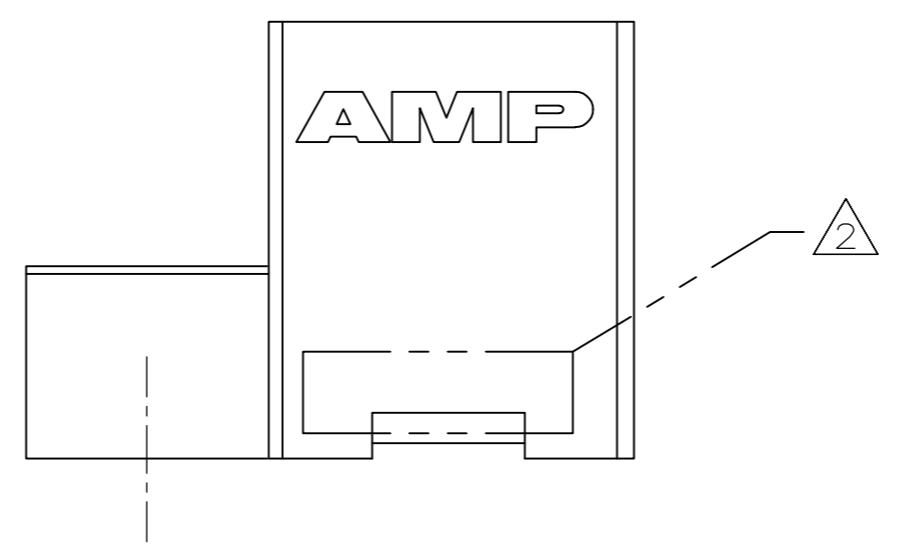
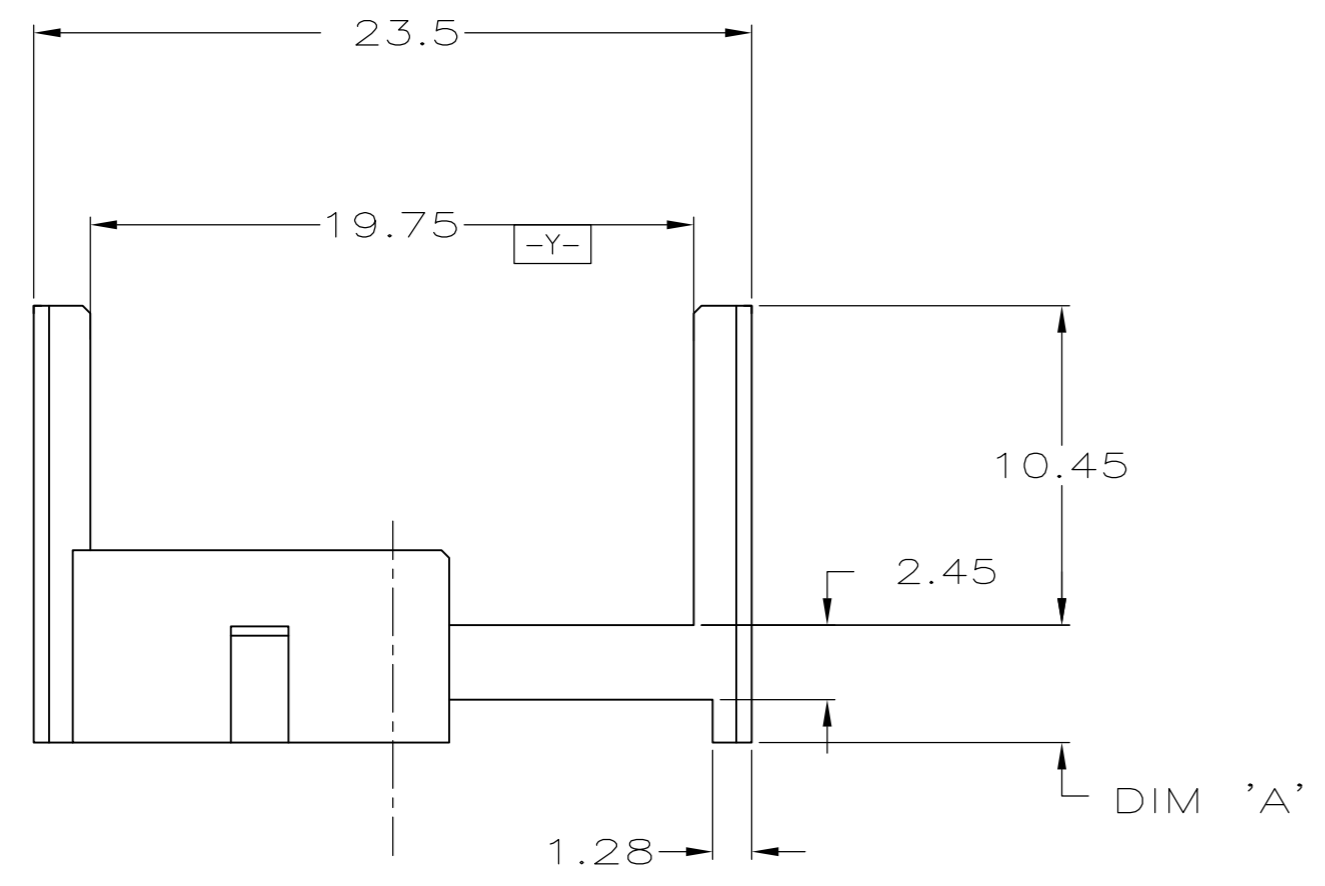
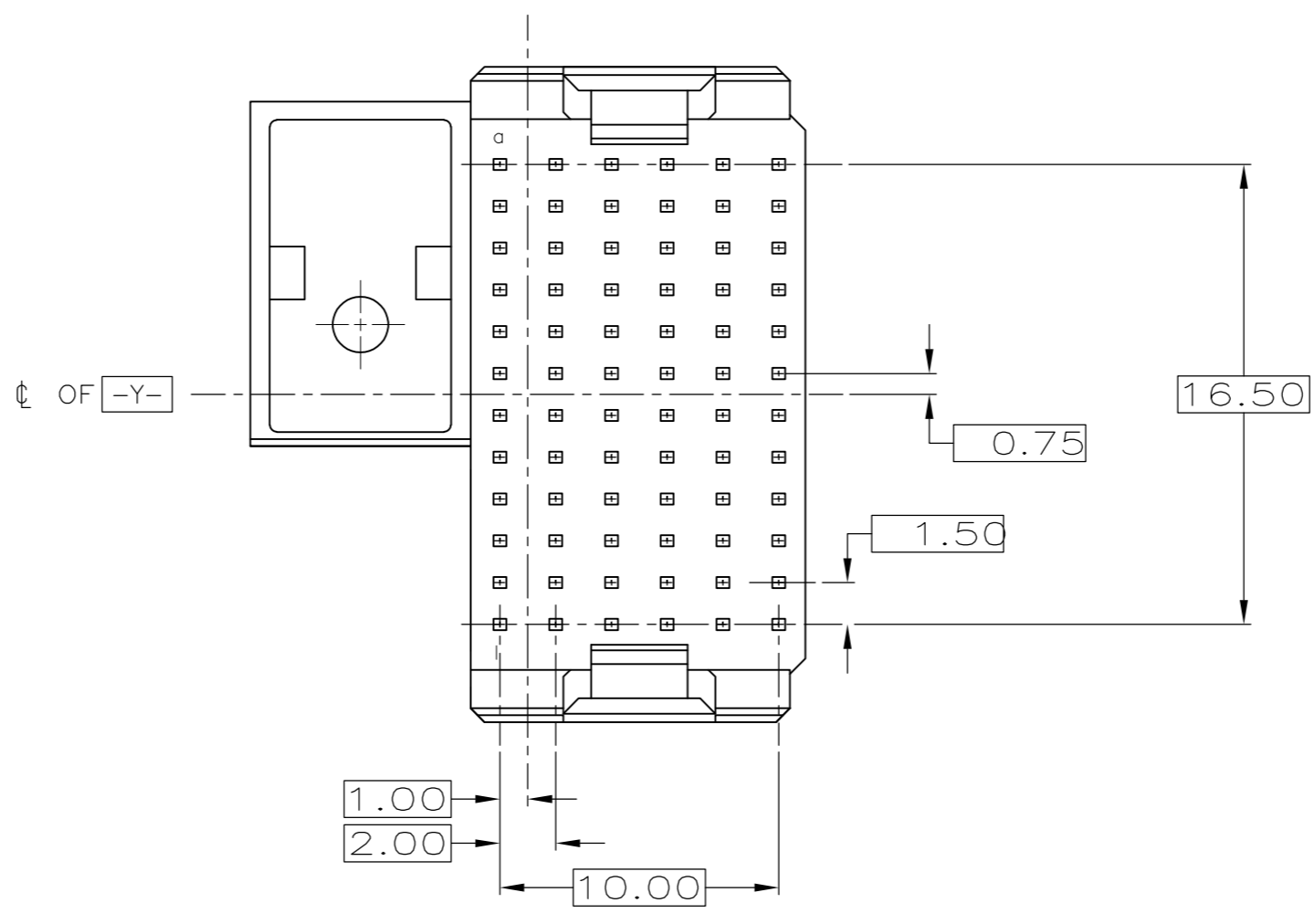


THIS DRAWING IS UNPUBLISHED. RELEASED FOR PUBLICATION .19
 © COPYRIGHT 19 BY AMP INCORPORATED. ALL RIGHTS RESERVED.

LOC		DIST		REVISIONS			
P	LTR	DESCRIPTION	DATE	DWN	APVD		
	C	REVISED PER 0U1B-0096-00	31MAR00	DKS	HWA		
	C1	REVISED PER ECO-09-020689	02SEP09	KK	AEG		
	D	ECR-10-019054	15SEP10	DP	MQW		

- ① MATERIAL: 30% GLASS-FILLED POLYESTER.
- ② CONNECTOR MARKED WITH PART NUMBER AND DATE CODE.
- ③ RECOMMENDED MIDPLANE THICKNESS TO MAINTAIN STANDARD THREE-LEVEL SEQUENCING.
- ④ OBSOLETE PARTS: OBSOLETE CIS STREAMLINING PER D.RENAUD/D.SINISI



OBSOLETE	④	3.75	4.00	120648-7
		4.0	3.75	120648-6
		4.25	3.5	120648-5
		4.5	3.25	120648-4
OBSOLETE		4.75	3.0	120648-3
		5.0	2.75	120648-2
		5.25	2.50	120648-1
	③	DIM "A"		PART NO

THIS DRAWING IS A CONTROLLED DOCUMENT.		DWN SK MICKIEVICZ 22APR97	AMP Incorporated Harrisburg, PA 17105-3608	
DIMENSIONS: mm	TOLERANCES UNLESS OTHERWISE SPECIFIED:	CHK SK MICKIEVICZ 02NOV99	AMP	
	0-PLC ± 1-PLC ± 2-PLC ± ±0.2 3-PLC ± 4-PLC ± ANGLES ± FINISH -	APVD HW ANDREWS 02NOV99	NAME MALE SHROUD HOUSING, LEFT-HAND FEED-THROUGH MIDPLANE, UNLOADED 12-ROW, 72 POSN, GUIDE/KEY MODULE	
MATERIAL ①		PRODUCT SPEC -	SIZE A2	RESTRICTED TO -
		APPLICATION SPEC -	CAGE CODE 00779	DRAWING NO C-120648
		WEIGHT -	CUSTOMER DRAWING	
			SCALE 4:1	SHEET 1 OF 1
				REV D

120648